

THREE PRODUCTS

TAILORED TO

FIT YOUR PRACTICE



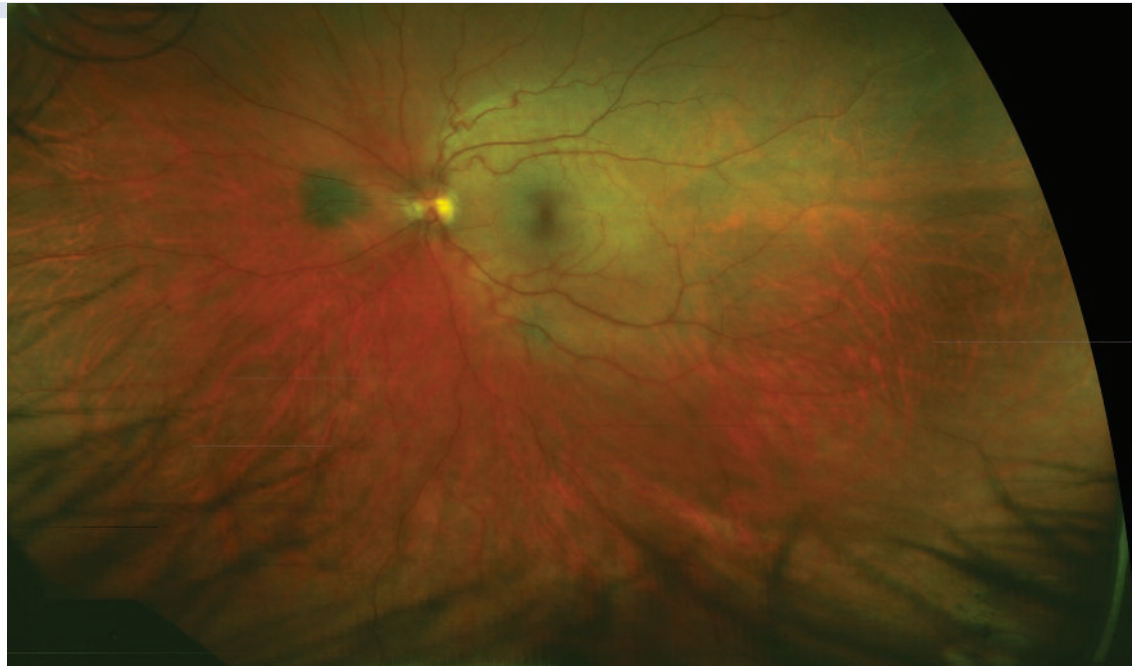
Building *The* Retina Company

 **optos**<sup>®</sup>  
optos.com

## Optos Core Technology

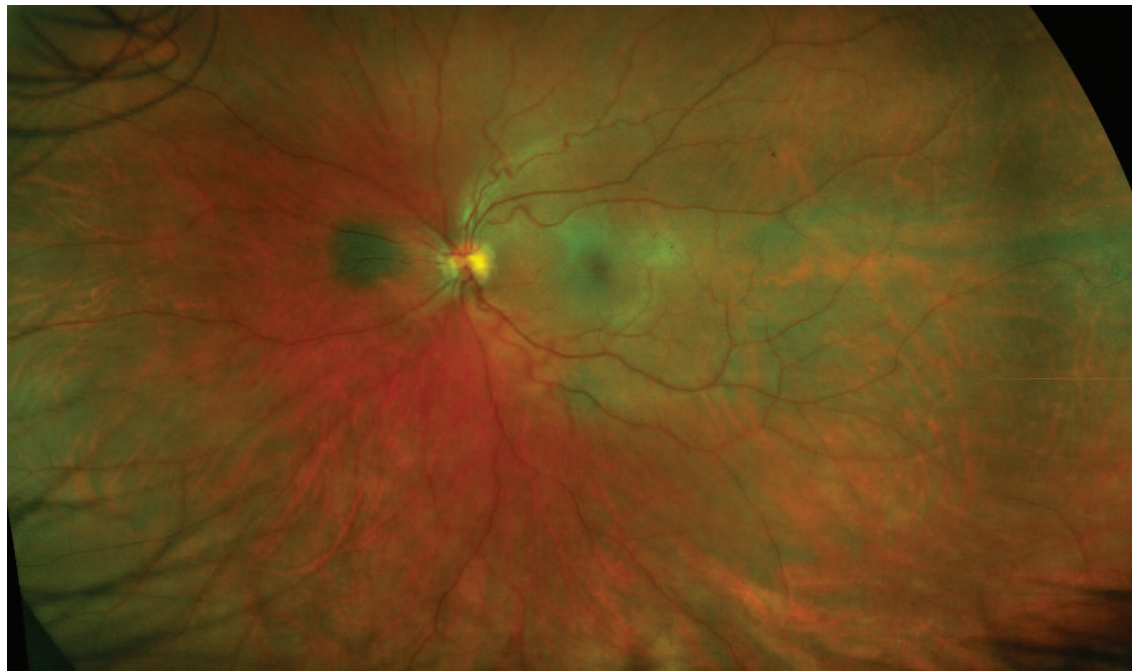
Optos® introduced retinal imaging with ultra-widefield scanning laser technology to support practitioners diagnosing, analyzing, documenting and monitoring ocular pathology that may first present in the periphery and otherwise go undetected using traditional examination techniques and equipment. Our full range of ultra-wide high resolution imaging devices are suitable for all practices and available with simultaneous non-contact pole-to-periphery views of **up to 82% or 200 degrees of the retina in a single capture.**

P200



P200 *optomap® plus*

200Dx™



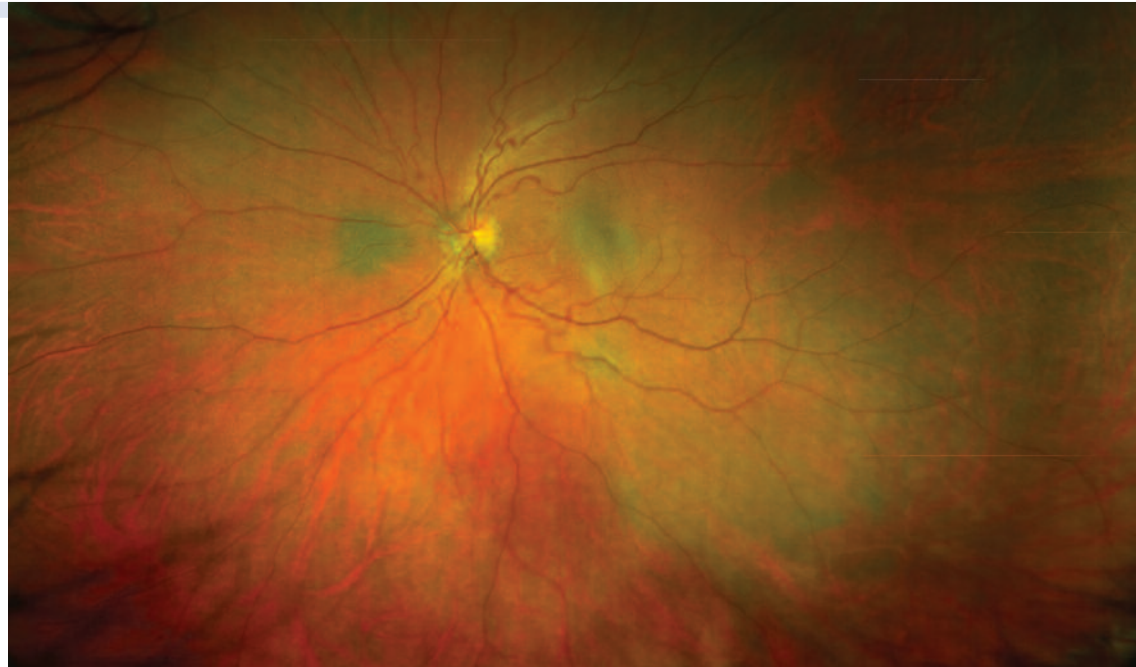
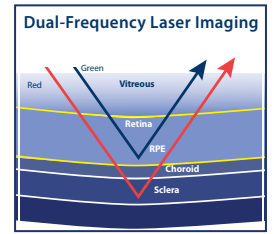
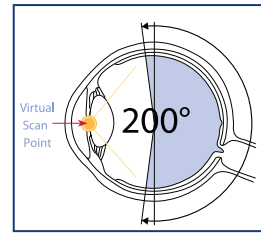
200Dx *optomap® plus*

Optos is a leading provider of innovative solutions for comprehensive retinal evaluation, enabling practitioners to more effectively detect, monitor and promote patient health.

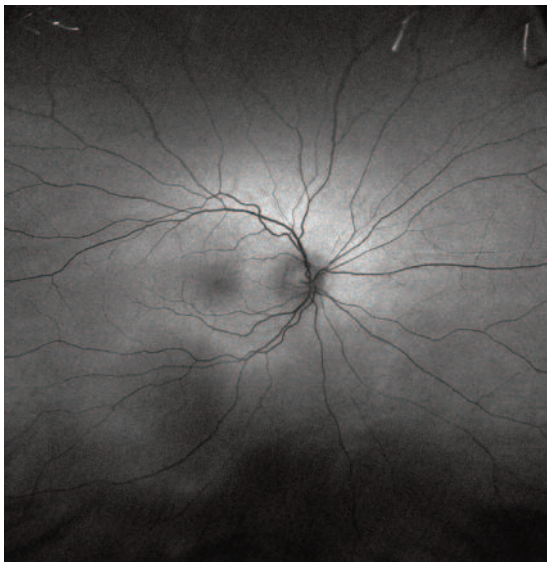
Optos® has 100 completed and ongoing clinical studies that support our commitment to the belief that an ultra-wide view of the retina helps eye care professionals provide the best care for their patients. Approximately 4,000 devices are installed worldwide and more than 30 million patients have received an optomap.

### COHERENT LASER LIGHT

Optos' technology incorporates multiple low-powered laser wavelengths that scan simultaneously. It uses a red laser and a green laser to image the choroid and retina.



Daytona optomap® plus



Daytona optomap® af

Features	P200	200Dx	Daytona
----------	------	-------	---------

Practice: Best Fit	Wellness Screening	Pathology Discovery, Diagnosis and some Referral	Disease Discovery, Management and Extensive Referrals
Foot Print	Free Standing	Free Standing	Desktop Model
Resolution	High	High	Ultra-high
Image Capture	Manual	Manual	Auto-Capture
Image Types			
Color Composite View	•	•	•
Green Laser View	•	•	•
Red Laser View	•	•	•
Autofluorescence			• (optional)
Easy to Use Patient			
Alignment System	•	•	•
Eye Steering	•	•	
Improved Image Quality		•	•
Improved visualization of retinal nerve fiber layer		•	•
Enhanced small vessel and macular detail		•	•
Automated Iris Detection			•
Workflow based Software			•

## P200



The original Optos technology that created ultra-widefield retinal imaging and became a standard of care in many practices, P200 provides Ultra-widefield and Central Pole Retinal Imaging. With these options the P200 provides two procedural tracks to support wellness and medical imaging procedures. The P200 is our most widely used widefield retinal imaging device for practices that focus primarily on a healthy patient base. Doctors looking for a practice differentiator and strong value proposition choose P200.

## 200Dx™



The newly released 200Dx, complement to the P200, offers similar features - ultra-widefield and central pole imaging. Additionally, the 200Dx has enhanced image quality, a redesigned patient interface and new examination techniques such as the Magnifier tool. Practices with a healthy patient base and some need for managing ocular disease by annual comparisons and referring images find 200Dx their best option. These offices have a strong interest in clinical imaging and analysis.

## Daytona



The newest addition to the Optos family of retinal devices, Daytona is designed as a desktop model with key features similar to our earlier retinal imaging devices. It was built to meet the demand for more exacting clinical imaging and analysis capabilities within practices seeing a healthy patient base with some need for managing ocular disease by annual comparisons and referring images to specialists. The doctors have strong interest in new image modalities such as autofluorescence to manage patients with pathologies.



Optos, Inc.  
67 Forest Street  
Marlborough, MA 01752  
USA

800-854-3039  
optos.com

Optos is a leading provider of innovative solutions for comprehensive retinal evaluation, enabling practitioners to more effectively detect, monitor and promote patient health.